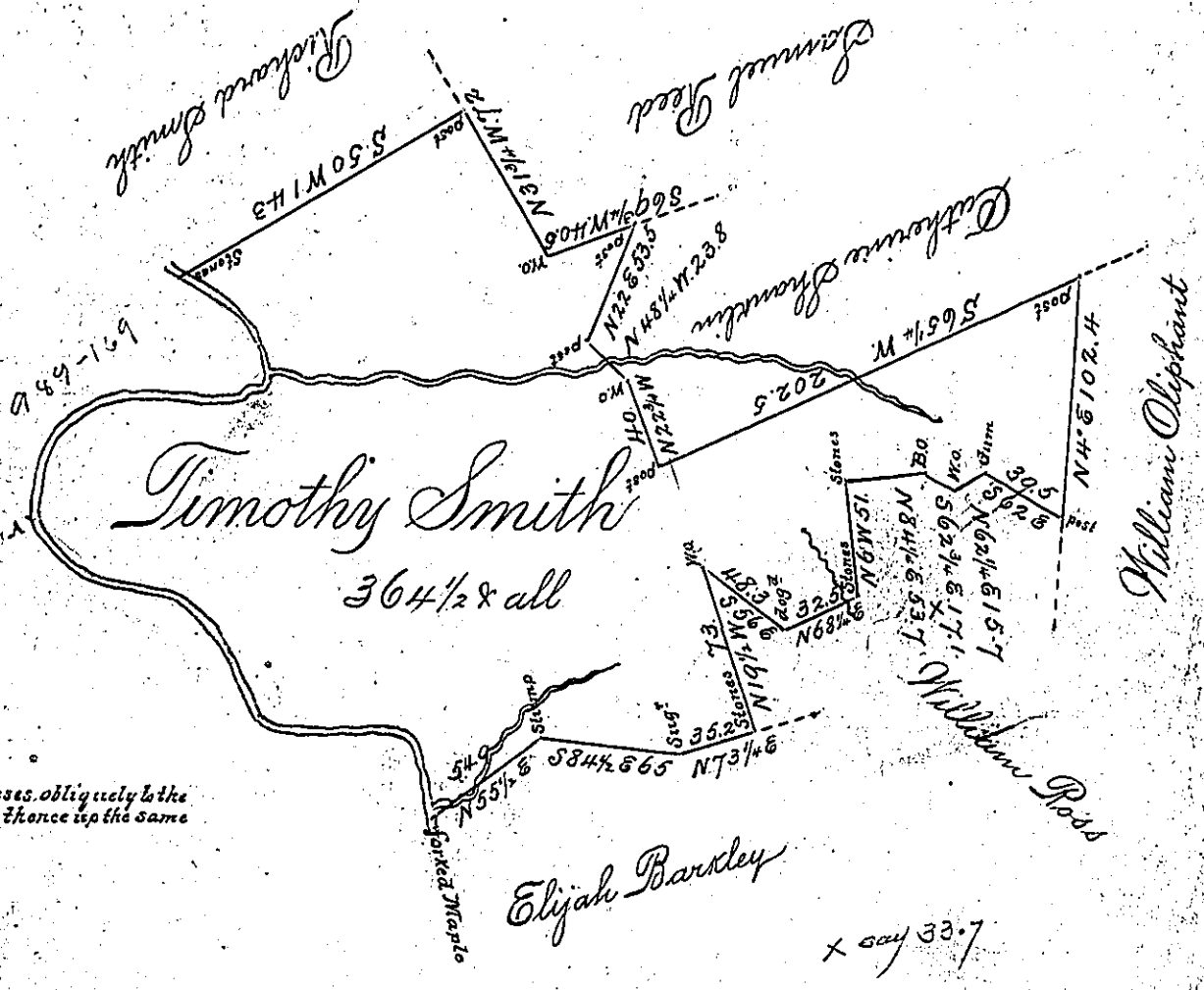


Courses up Redstone on the South side thereof

- S 53 1/2 E 38
- S 28 1/2 E 9.1
- S 5 1/2 W 18.1
- S 50 W 6.7
- N 89 W 28.6
- N 84 1/2 W 10.6
- S 82 1/2 W 20
- S 60 1/2 W 22
- S 31 1/2 W 11.5
- S 9 W 32.7 197.3
- S 40 1/2 E 26.1
- S 73 1/2 E 56.8
- S 45 E 27.2
- S 29 1/2 E 37.3
- S 81 E 8.5
- N 76 E 44.5
- S 73 E 10.4
- S 3 1/2 E 31.6 forked Maple

here it crosses obliquely to the North side thence up the same



Situate on the north side of great Redstone Creek in Franklin Township Fayette County and Surveyed the 17th day of March 1796 In pursuance of a Warrant dated the 24th day of July 1794

p Alexander McLean Deputy

To Daniel Brodhead Esquire
Surveyor General

IN TESTIMONY that the above is a copy of the original remaining on file in the Department of Internal Affairs of Pennsylvania, made conformably to an Act of Assembly approved the 16th day of February, 1833, I have hereunto set my Hand and caused the Seal of said Department to be affixed at Harrisburg, this sixth day of December 1898



James W. Latta
Secretary of Internal Affairs